

Newcastle University Orientation



From our University. For the world.

Introduction

Welcome to Newcastle University! In this presentation, we're aiming to provide key information about studying here at Newcastle.

We will cover...



Getting
around



Key
facilities



Student
services



Communications



Academic
life



Student
life



Getting Around

You can access the campus map on the Student Portal. It's a great way to find where your classrooms are located.

The Campus Map has information on food and drink, microwaves, prayer spaces, nursing spaces, and more:

https://www.ncl.ac.uk/students/campus_map/

From our University. For the world.

Getting Around

Want to get to know
campus better?

The Students' Union does
campus tours!

[https://nusu.co.uk/activities/
giveitago/events](https://nusu.co.uk/activities/giveitago/events)



Student Portal

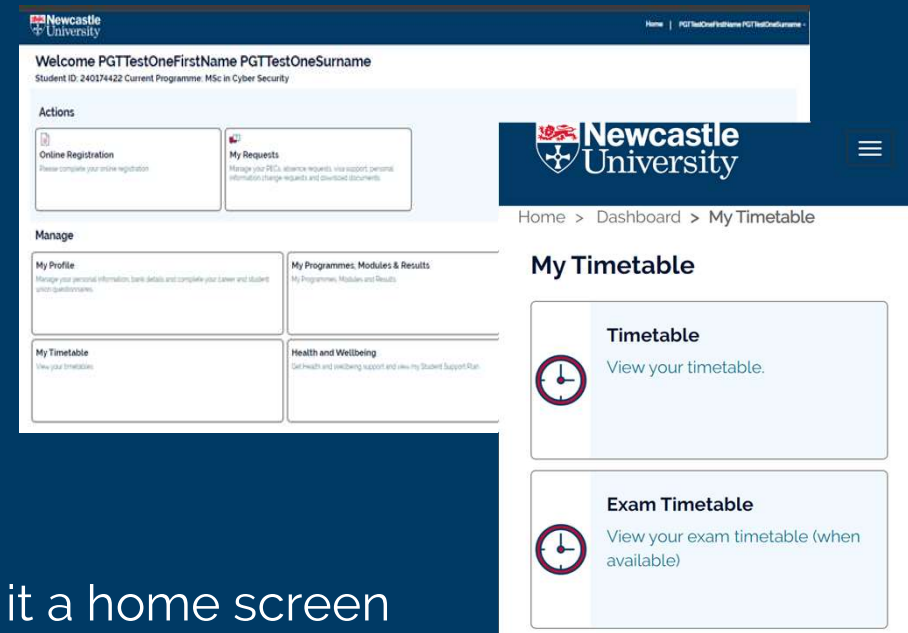
The Student Portal holds key information you'll need whilst studying at Newcastle University.

On the Portal, you can:

- View and choose your modules
- Submit a Personal Extenuating Circumstances (PEC) request
- Submit an absence request
- View your timetable and exam timetable
- View the campus map
- And much more!

To easily access the Student Portal, you can make it a home screen shortcut on your phone, desktop or laptop.

<https://studentportal.ncl.ac.uk/>



Key Facilities

There are a few key locations that everyone should know about during their time at Newcastle University.



King's Gate



University Libraries



Sports Centre



Students' Union

From our University. For the world.

Key Facilities

There are a few key locations that all students will need to know about during their time at Newcastle University.



King's Gate



University Libraries



Sports Centre



Students' Union

From our University. For the world.

Student Services

What are student services?

Student Services can provide information and support for a range of concerns. Their services aim to be friendly, safe and accessible.

What do they do?

Student Services will work with you to discuss problems and possible solutions. They can give advice and signpost you to other relevant services.

How can I access them?

You can go to Reception on Level 1 of King's Gate.



FINANCE

Funding, budget planning, support for those experiencing financial difficulties, etc.

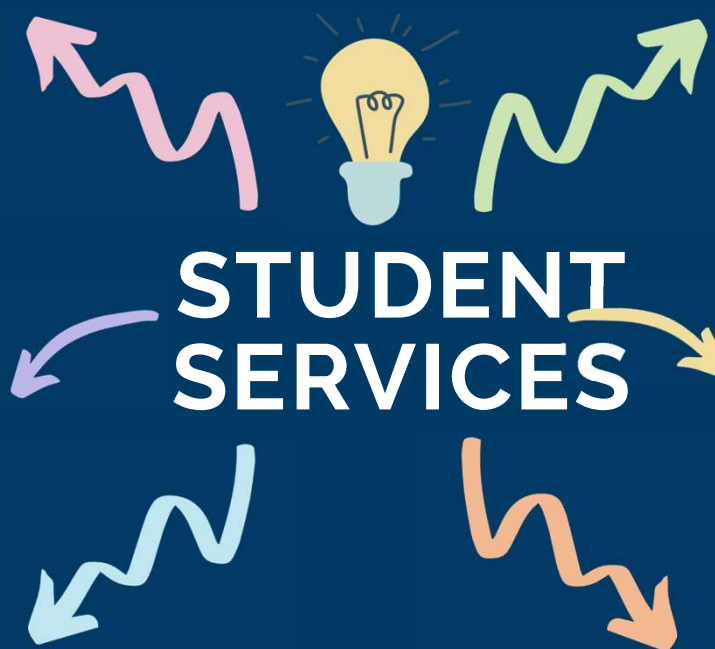
ACADEMIC

Study support, university registration, changes of study circumstances, etc.

WELLBEING

Support focused on your mental health, including counselling, tips for managing stress, etc.

For support with any of these, visit Reception on Level 1 King's Gate.



You can find more information about student services here:
<https://www.ncl.ac.uk/student-services/>

CAREERS

Discuss employers, advice for your next steps, improving your CV, advice on starting your own business, etc.

VISA

Guidance and renewal, immigration rules, working in the UK after graduating, etc.

AND MORE!

IT support (NUIT), the chaplaincy, accommodation, letters and paperwork, etc.

From our University. For the world.

Further Support

For student parents and carers

Financial:

Many forms of financial support including bursaries and grants are available.

<https://www.ncl.ac.uk/student-financial-support/students-with-dependants/>

Wellbeing:

Wellbeing and community-based support are also a great way of feeling connected with other parents/carers.

The NU Parents Network supports staff and Postgraduate student parents through social activities and information sessions to connect parents within the University.

[NU Parents Network - NU Parents Network](#)

Newcastle Council also provide guidance on childcare and family support here:

<https://www.newcastlesupportdirectory.org.uk/>

Adult dependants

Adult Dependants' Grant (ADG) 

Support for parents

Parents' Learning Allowance (PLA) 

Childcare Grant (CCG) 

UK Undergraduate Student Parent Bursary 

Free childcare and education for two to four year olds 

Childcare provision and advice 

From our University. For the world.

Further Support

Disability Support for International Students

Find more information here: <https://www.ncl.ac.uk/wellbeing/disability-support/>

Financial:

- If you're on a UK Research and Innovation (UKRI) studentship, you're eligible to apply for a Disabled Students' Allowance (DSA).
- If you're not eligible for DSA funding, your Disability Advisor can apply for funding from the University to fund your support needs (such as equipment/software).

Learning Adjustments:

- The University can support students with adjustments through a Student Support Plan (SSP). SSPs can support students with chronic conditions, mental/physical health conditions, neurodivergences, and more. **You don't need a diagnosis to access the University's disability support.**

If you need disability support, fill in the [Student Wellbeing Form](#) on the link above.

Connect with other students through the Disability, Mental Health and Neurodiversity Society:
<https://nusu.co.uk/activities/view-society/488>

Further Support

The EDI Toolkit

The Equality, Diversity and Inclusion Toolkit provides resources to create an inclusive campus and diverse world.

Information regarding: How to be an ally, what protected characteristics are and, current EDI projects of the University, set up to further support and empower marginalised groups.

<https://www.ncl.ac.uk/students/edi-toolkit-for-students/>

Multicultural Welcome Guide

You can find this Students' Union welcome guide to the city here:
<https://nusu.co.uk/support/community/bame>

Cost of Living

The University is aware of the increases in the cost of living in the UK. They have support and resources available to help students who may be struggling.

<https://www.ncl.ac.uk/students/cost-of-living-support/>

Our upcoming priorities and projects



Race equality >

Newcastle University holds a Bronze Race Equality Charter (REC) Award. We were the only UK university to give Dr Martin Luther King Jr an honorary degree during his lifetime.



Gender equality >

Newcastle University are proud to be a member of the Athena Swan Charter and hold an Institution level Silver Athena Swan Award and 19 school level awards. We are dedicated to promoting gender equality across campus.



Disability inclusion >

Newcastle University is a member of the Business Disability Forum (BDF). We have set up a disability network so that colleagues and students can share experiences and influence policies and practices across our services.



Faith, religion and belief >

We welcome individuals of all faiths and are proud of our religious diversity. Get involved with one of our faith groups or find out about worship spaces on campus.



Lesbian, gay, bisexual and transgender >

As a Stonewall Global Diversity Champion, we are finding even more ways to ensure Newcastle University is lesbian, gay, bisexual, transgender and non-binary (LGBT+) inclusive.



Family friendly and carers >

Newcastle University aspires to be a family friendly centre of excellence providing the very best support to parents and carers.

Financial Support



Catering



Resources



Advice



Utilities/Energy



Transport



Wellbeing Support



Academic Support



Careers Support



Postgraduate Support



Events



From our University. For the world.

Communications

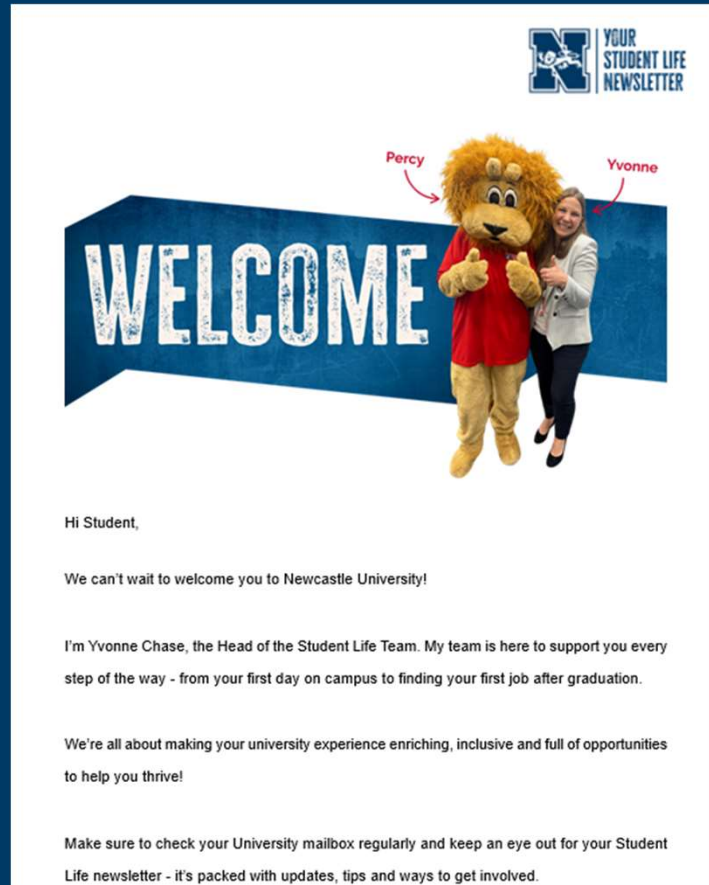


Check your emails!

This is how the University and Students' Union communicates with you.

From our University. For the world.

Communications



The Student Newsletter


Student newsletters are sent to your university email address during term time. They include important updates, signpost to key resources and highlight events taking place in Newcastle.

The newsletters are normally sent out on Tuesdays, once every fortnight for undergraduates and postgraduate taught students. PGR students receive their own PGR newsletter on the last Thursday of every month.

The Students' Union also sends a weekly newsletter.

From our University. For the world.

Communications



TOP TASKS Accessible menu


NEWS POLICIES UNITS AND SERVICES

Our University / Student Noticeboard

NUConnect

Search for articles

Search for people



Data skills are transforming every industry. Be part of it.

Explore our range of new Data Science conversion Master's degrees, designed for those ready to transition into a data-focused career and without a quantitative undergraduate degree.

January 21st 2026

COMING EVEN

Upcoming NCL in Action events

Source: NUConnect News

January 21st 2026

Student Elections 2026 Are Here!

Source: NUConnect News

January 21st 2026

Visually Prepared – Blind in Business

Source: NUConnect News

January 20th 2026

Blue Planet Connect 2026: Recruitment & Skills Fair

Source: NUConnect News

January 19th 2026

Student Noticeboard

<https://newcastle.sharepoint.com/hub/student-noticeboard>

The noticeboard is an online hub for all university updates. You can find out about the latest updates, events and opportunities from across our services and facilities.

Make sure to bookmark and check the page regularly.

From our University. For the world.

Communications

Keeping up with information from the university will help you make the most of your time here - you should pay attention to the following:



Academic communications

In induction week, you may have found out the means of communication that your programme prefers. This will ensure you're kept up to date for your studies.

If you aren't sure, check with staff/module leaders if you'll receive information through your student email address, Canvas pages, Microsoft Teams or other services.

Academic Life

Even if you've studied at a college or university before coming to Newcastle University, you might find that we do things differently - here are some things to know!

Personal tutor: A member of academic staff assigned to support you. They will be your first point of contact for most questions you have.

Peer mentor: For undergraduate students. A peer mentor is a student in a later stage of your degree program who will provide advice in your first year.

School office: The administrative centre of your School. The staff here may be able to help you with administrative questions.

Induction: 'Induction' is the information sessions and meetings at the beginning of the year to prepare you for your studies going forward.

Understanding Academic Culture

A collection of resources and practical advice to help you understand academic culture in the UK

For more definitions and in-depth explanations of UK university culture, go to the Understanding Academic Culture page of the Academic Skills Kit.

These resources cover topics such as studying in English, developing skills such as critical thinking and managing assessments.

<https://www.ncl.ac.uk/academic-skills-kit/collections/academic-culture-uk/>

From our University. For the world.



Building your own understanding >

Studying at Newcastle University gives you opportunities to take control of your own academic development.



Thinking and writing critically >

Students are expected to think and write 'critically'. But what does this mean, and how can you do it?



Studying in English >

Studying in a second language brings many opportunities, but sometimes it can be challenging, too.



Completing assessments >

The University assesses students' learning in various ways. This mixture of assessment styles is designed to develop and test a range of your skills.



Managing your studies >

Students are expected to take responsibility for their studies. This means managing your own commitments and engagement to make sure you get what you want from your time at university.



Using other scholars' work >

Engaging with other scholars' work is one of the most important and rewarding aspects of studying at university. However, you need to make sure you always use scholarship honestly and properly.



Learning collaboratively >

Your tutors are not the only people you can learn from. You can also learn a lot from other students.



Interacting with others at university >

The University is a place where everyone has the right to be treated respectfully and equally.



Academic Skills Podcast >

Listen to a range of students share their experience of assessments, critical thinking and more.

There are lots of resources available to help you improve your academic English.

<https://www.ncl.ac.uk/academic-skills-kit/collections/academic-culture-uk/english-language-support/>

Academic Life

Digital/online resources are used extensively. You should familiarize yourself with Canvas, the university's virtual learning environment. Canvas is where you can expect to find your course content, study materials, and module and programme information.



For more information about Canvas, look through the Academic Skills Kit! This page includes a useful video and other resources.

<https://www.ncl.ac.uk/academic-skills-kit/information-and-digital-skills/canvas/>

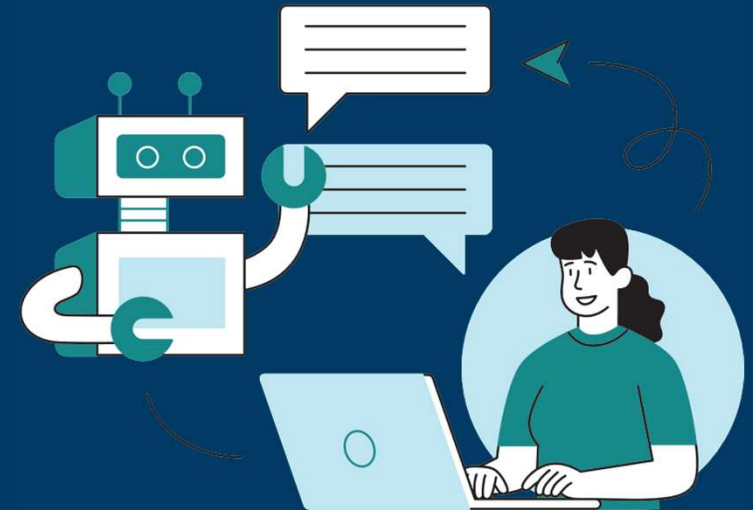
Academic Life

It's important to understand how to use Artificial Intelligence (AI), such as ChatGPT, responsibly in your studies.

Read through the University's guidance before using AI in your studies.

<https://www.ncl.ac.uk/academic-skills-kit/good-academic-practice/artificial-intelligence/>

Remember: generative AI is not an academic source and can't replace your own thinking.



Academic Life

Ethical ways to use AI academically	Things to avoid when using AI
Acknowledge and reference when you have used AI	Claiming you created AI-generated work
Evaluate AI outputs critically	Using AI to avoid learning how to carry out a task or technique
Using AI to support with routine tasks, such as summarising information or structuring ideas	Entering personal or sensitive information into AI tools

When used properly, AI can be a helpful tool that enhances your studies and supports your learning. Using AI inappropriately may be **academic misconduct**.

There are serious consequences to academic misconduct.

Academic Life

A word of warning about grades...

The grading system in the UK might be different to what you're used to! In an undergraduate degree, **70% is excellent.**

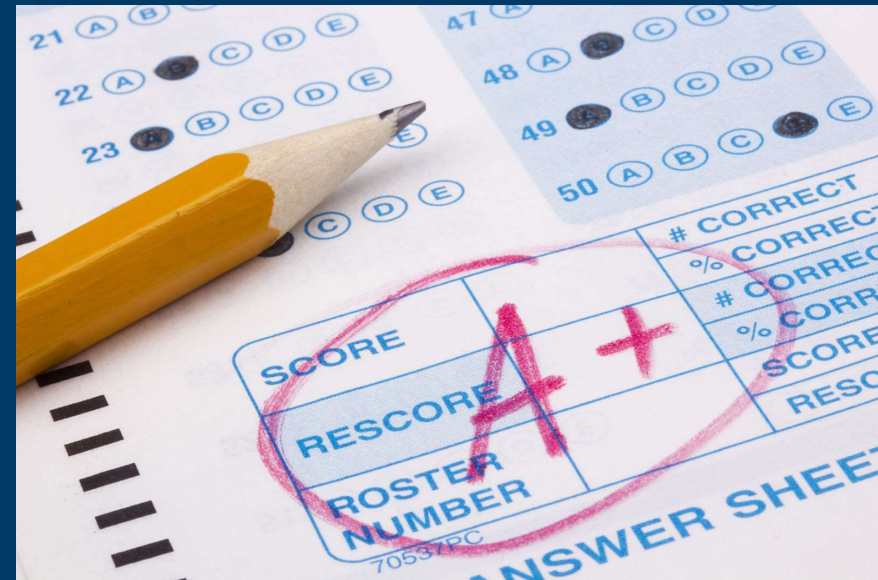
Approximate degree classifications

First Class (1st): 70%

Upper Second Class (2:1): 60%

Lower Second Class (2:2): 50%

Third Class (3rd): 40%



Study Spaces

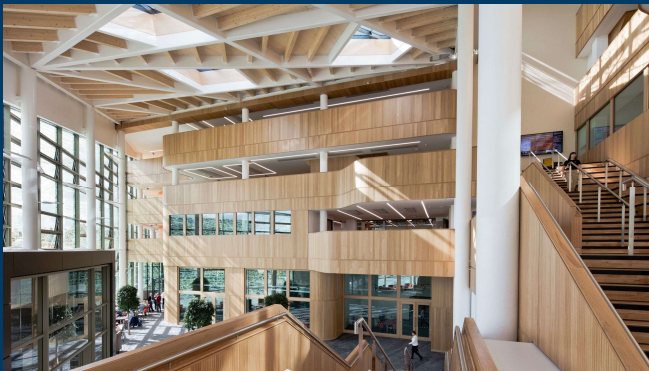
- The Philip Robinson Library ('the Robbo') - main campus library for all subjects except medicine and law. Open 24 hours during term time.
- The Marjorie Robinson Library Rooms ('the Marj') - large amounts of study spaces for silent and collaborative work.
- The Walton Library - located 5th floor of the Medical School. It has resources for students of Medicine, Dentistry, Psychology and Biomedical Sciences.
- The Law Library - located in Newcastle Law School and contains resources specifically for law students.



Study Spaces

As well as the main libraries, you can find study spaces and computer clusters in many of the university buildings and in the Students' Union. And if you're tired of being on campus, there are plenty of cafes nearby too!

Urban Sciences Building



Dame Margaret Barbour Building



Black Sheep Coffee,
Grainger Street



Find spaces here: <https://www.ncl.ac.uk/students/study-space-finder/>

Food on campus



If you need somewhere to eat while on campus, Newcastle University has plenty of options!

**CHICKEN
SHACK**

Hadrian Building

COURTYARD

Old Library
Building

DAYSH CAFE

Henry Daysh
Building

SHIJO

NUSU

**FREDERICK
DOUGLASS CAFE**

Frederick
Douglass Building

**KIMCHI
PLANET**
NUSU

WETHERSPOONS
NUSU

THE GRAND
King's Walk

SPORTS

CENTRE CAFE
Sports Centre

BITES
Dental School

URBAN CAFE
Urban Sciences
Building

**BUSINESS
SCHOOL CAFE**
Business School
Atrium

**PHILIP
ROBINSON CAFE**
Philip Robinson
Library

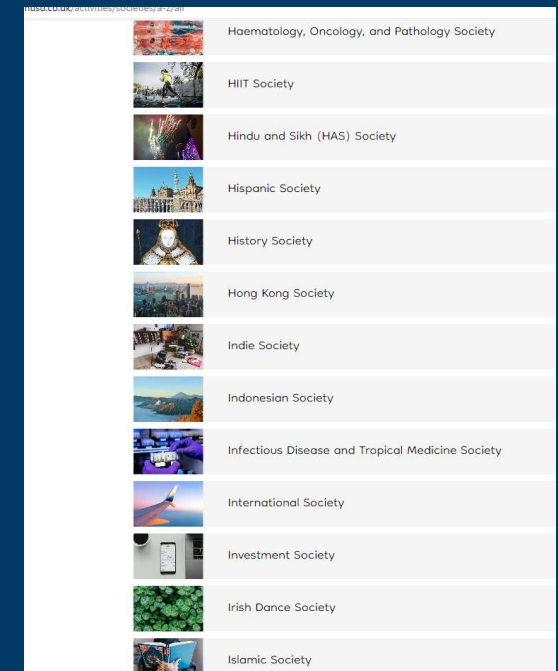
From our University. For the world.














Student Life

There's so much more to university life than just your lectures. Here at Newcastle, we have many opportunities for students to get involved with outside of their studies.

Societies

- Newcastle is home to over 160 student-led societies, meaning there really is something for everyone.
- There are societies related to hobbies, academic courses, cultural groups and more.
- You will be able to chat to these groups at the Club, Societies and Volunteering Fair – Monday 26 January, 11:00 at the Lindisfarne Room, Hadrian Building!



	Haematology, Oncology, and Pathology Society
	HIIT Society
	Hindu and Sikh (HAS) Society
	Hispanic Society
	History Society
	Hong Kong Society
	Indie Society
	Indonesian Society
	Infectious Disease and Tropical Medicine Society
	International Society
	Investment Society
	Irish Dance Society
	Islamic Society

From our University. For the world.

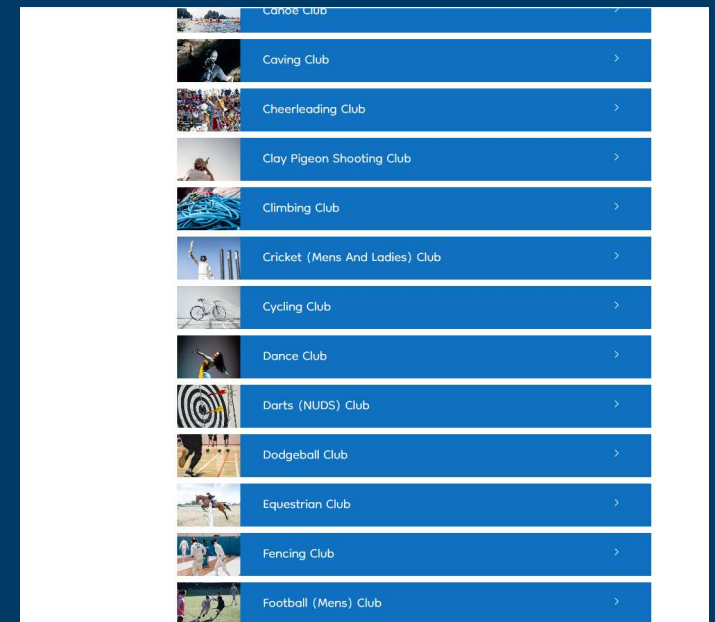
Student Life

There's so much more to university life than just your lectures. Here at Newcastle, we have many opportunities for students to get involved with outside of their studies.

Sports Clubs

There are over 60 different sports clubs at Newcastle University, with many offering the chance to compete up to BUCS (British Universities and Colleges Sport), national and international levels! Many also let you play casually.

You can also join intramural teams and join fitness classes at the Sports Centre.



From our University. For the world.

Student Life

There's so much more to university life than just your lectures. Here at Newcastle, we have many opportunities for students to get involved with outside of their studies.

Volunteering

The Students' Union can help you find volunteering opportunities on campus and in the city. You can join a one-off event or sign up to volunteer frequently at long-term projects such as N.E.S.T!

Volunteering is a great way to help others, meet new people and gain new skills.



From our University. For the world.

Student Life

There's so much more to university life than just your lectures. Here at Newcastle, we have many opportunities for students to get involved with outside of their studies.

Student Media

Student Newspaper: The Courier

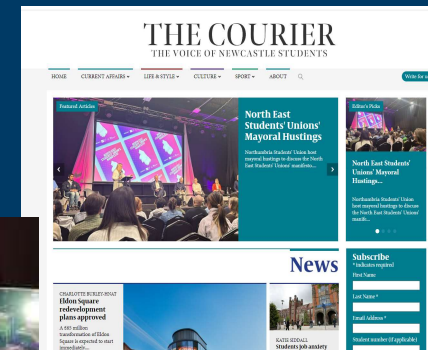
Opportunities to work on articles surrounding world news, sports, arts and much more.

Student Radio: NSR

Host your own live radio show or podcast from NUSU's radio station.

TV Broadcasting: NUTV

Work in front of the camera or behind the scenes producing broadcast shows.



From our University. For the world.

Student Life

There's so much more to university life than just your lectures. Here at Newcastle, we have many opportunities for students to get involved with outside of their studies.

Give It A Go

Give It A Go is the Student Union's casual activities programme for students.

It encourages you to try something new with activities including day trips, arts and crafts, sports, game nights and so much more.



From our University. For the world.

Student Life

Getting involved in student life isn't just a great way to meet new people and gain new skills. At the end of the year, we celebrate students' work and achievements through the Celebrating Success Awards and the Newcastle University Awards.



From our University. For the world.

Any questions?



From our University. For the world.